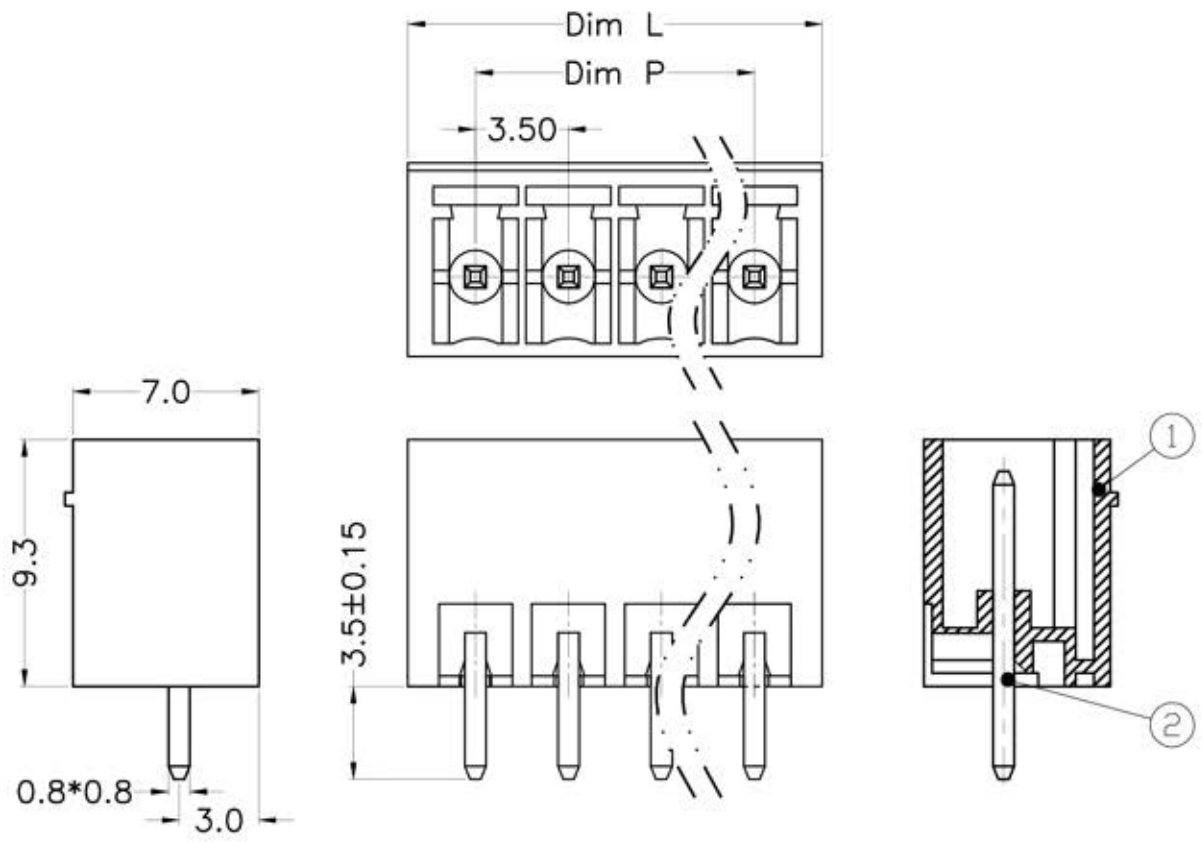


REV.	DESCRIPTION	DATE	DRAWN	APPROVED
A1	DWG.REL	2016/10/7	FANG	YANG



- Material
 ⓄHousing : PA66, UL94V-0
 ⓄPin header : Brass, Tin plated
- Electrical

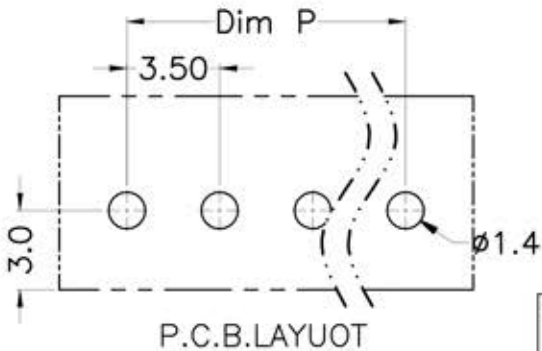
	UL	IEC
Rated voltage :	300V	250V
Rated current :	8A	7A
Insulation resistance:	500MΩ/DC500V	
Withstanding Voltage :	AC1500V/1min	
- Mechanical
 Operating temperature: -40℃~+105℃
 Soldering temperature: 250℃±5/5sec

HOW TO ORDER

TBPH - 00 - 137 - XX - XX - LF

No. of poles: 2~24P

- Color:
- GR = Green
 - BK = Black
 - BL = Blue
 - WH = White
 - GY = Gray
 - OR = Orange
 - RD = Red



N=Number of Poles
 Dim P=(N-1)x3.50
 Dim L=Nx3.50+1.6

Poles	Dim P	Dim L
2-6P	±0.10	±0.15
7-12P	±0.20	±0.20
13-18P	±0.25	±0.30
19-24P	±0.30	±0.40

GENERAL TOLERANCE		ANGLE TOLERANCE	
X.	±0.5	X'	±5'
.X	±0.3	.X'	±3'
.XX	±0.1	.XX'	±1'

DRAWING TYPE	CUSTOMER		
SCALE	1:1	SHEET	1 OF 1
DRAWING NO.	XP0012016-xxxx		

PROJECTION		TITLE	TBPH-00-137-XX-XX-LF
UNITS	mm	SHEET SIZE	A4
SHEET SIZE	A4	SERIES	TBPH-00-137

