

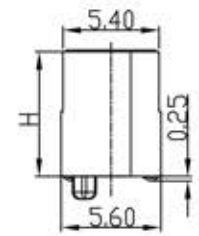
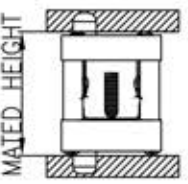
ROHS COMPLIANT

Ordering Information

BMEDF - 8XXX - XXX - XX - TR - LF

Pins Per Row	Height	Standard Plating	Packaging
050 = 05	050=H5.0 070=H7.0 090=H9.0	01=Gold Flash 02=Gold 3u" 03=Gold 10u" 04=Gold 15u" 05=Gold 30u"	TR = Tape & Reel
100 = 100			

- SPECIFICATIONS
- CURRENT RATING: 1.4A
  - VOLTAGE RATING 300 VDC.
  - OPERATING TEMPERATURE RANGE: -55°C TO +125°C
  - HIGH-SPEED CHANNEL PERFORMANCE 56 Gbps



POSITION	A	B	C	D
05	10.00	8.32	3.20	6.80
07	11.60	9.92	4.80	8.40
10	14.00	12.32	7.20	10.80
11	14.80	13.12	8.00	11.60
12	15.60	13.92	8.80	12.40
13	16.40	14.72	9.60	13.20
15	18.00	16.32	11.20	14.80
20	22.00	20.32	15.20	18.80
25	26.00	24.32	19.20	22.80
30	30.00	28.32	23.20	26.80
35	34.00	32.32	27.20	30.80
40	38.00	36.32	31.20	34.80
50	46.00	44.32	39.20	42.80
60	54.00	52.32	47.20	50.80
70	62.00	60.32	55.20	58.80
75	66.00	64.32	59.20	62.80
100	86.00	84.32	79.20	82.00

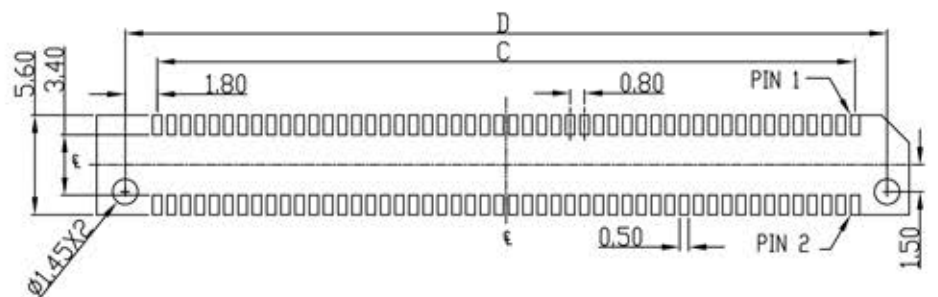
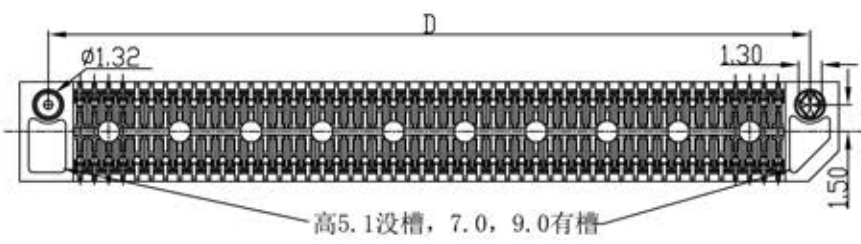
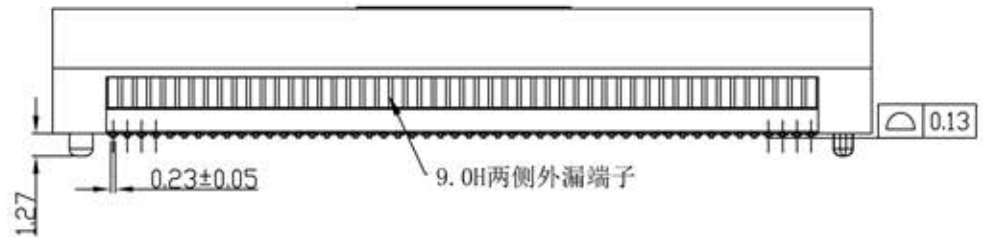
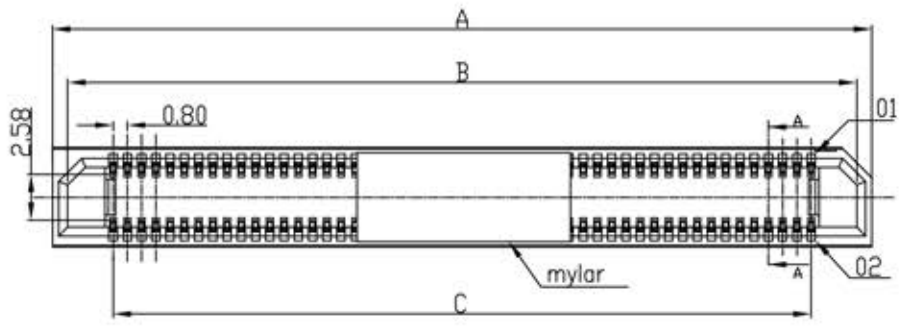
HEIGHT	H
5.00	5.10
7.00	7.00
9.00	9.00

ERF8 LEAD STYLE	MATED HEIGHT				
	ERMB LEAD STYLE				
	2.00	3.00	5.00	8.00	9.00
5.00	7.00	8.00	10.00	13.00	14.00
7.00	9.00		12.00	15.00	16.00
9.00	11.00		14.00	17.00	18.00

GENERAL TOLERANCE	ANGLE TOLERANCE	DESIGN DATE
X ± 0.38	X' ±5°	Jerry 2022.12.07
XX ±0.25	XX' ±2°	CHECK DATE
XXX ±0.13	XXX' ±1°	APPRO. DATE
	XXX' ±0.5°	
UNIT:mm	SCALE: 1:1	
A4	SHEET: 1 of 1	

**ME MAJOR LEAGUE ELECTRONICS**

FILE NAME (品名)	8MM BOARD MOUNT EDGE MATE FEMALE
PART NO (料号)	BMEDF-8XXX-XXX-XX-TR-LF
DRAWING NO (图号)	BMEDF-8
REV. AO	



Recommended PC board pattern  
(TOP VIEW)