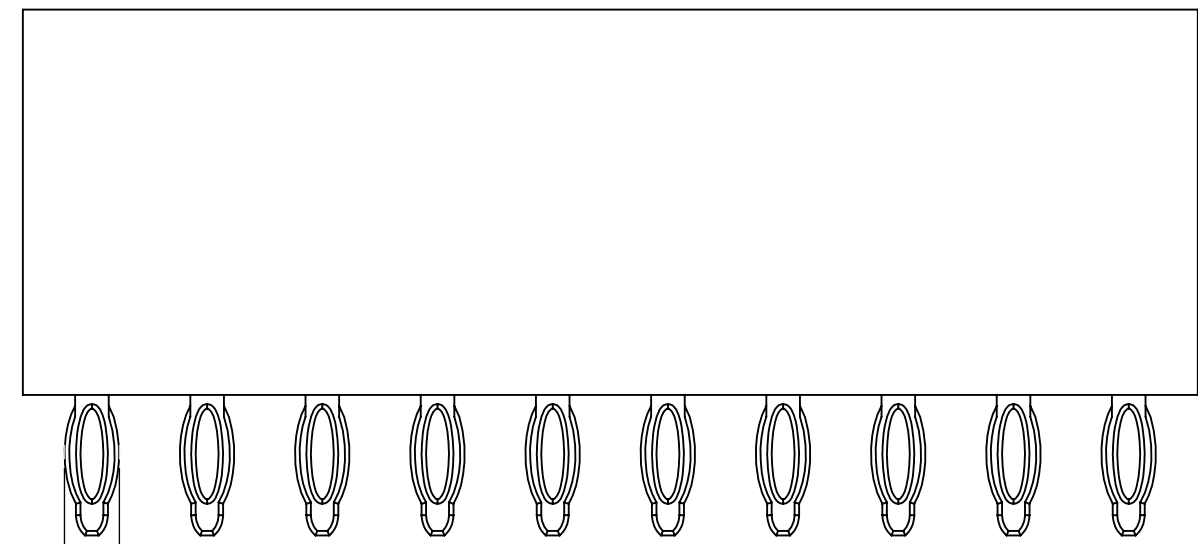


SSPFS-1 **XX** - **S** - **02** - **F** - **LF**  
**(A)** **(B)** **(C)** **(D)** **(E)**

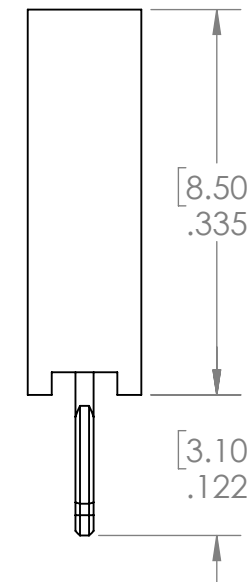
- A. Pins Per Row  
- 05,07,08,10,13,15
- B. Row Specification  
- S = Single Row
- C. Pin Options  
- 02
- D. Plating Options  
- F = Gold Flash
- E. Lead Free

**Specifications:**  
 Current Rating: 3.0 Ampere AC/DC  
 Voltage Rating: 250V AC/DC  
 Insulation Resistance: 1000M Ohms Min.  
 Dielectric Withstanding: 600V AC  
 Contact Resistance: 20M Ohms Max.  
 Operation Temperature: -40°C to +105°C

**Materials:**  
 Contact Material: Copper Alloy  
 Insulator Material: Polyester UL 94V-0, PBT



$[1.14]$   
 $.045$



Products are non-cancellable/ non-returnable.  
 Parts are subject to change without notice.

UNLESS OTHERWISE SPECIFIED:		NAME	DATE	
DIMENSIONS ARE IN INCHES		DRAWN	GWE 12/14/22	
TOLERANCES:		CHECKED	NDC 12/14/22	
ONE DECIMALS ±.100		ENG APPR.		
TWO DECIMALS ±.010		MFG APPR.		TITLE: SSPFS-1 SINGLE ROW
THREE DECIMALS ±.005				SIZE DWG. NO. REV
FOUR DECIMALS ±.002				<b>C</b> <b>A</b>
NEXT ASSY	USED ON	FINISH	SCALE 6:1 SHEET 1 OF 1	
APPLICATION		DO NOT SCALE DRAWING		

**PROPRIETARY AND CONFIDENTIAL**  
 THE INFORMATION CONTAINED IN THIS DRAWING IS THE SOLE PROPERTY OF Major League Electronics. ANY REPRODUCTION IN PART OR AS A WHOLE WITHOUT THE WRITTEN PERMISSION OF Major League Electronics IS PROHIBITED.