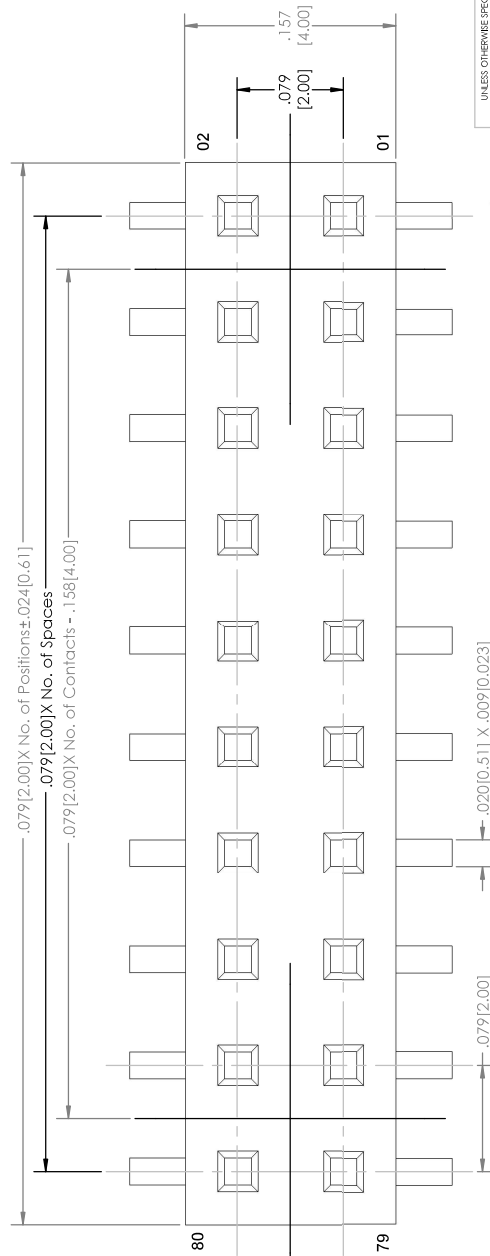
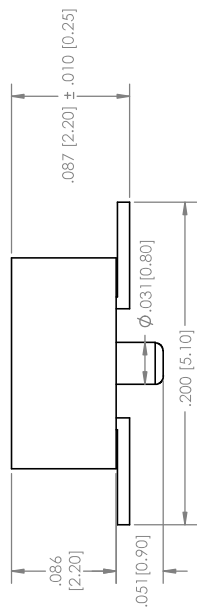
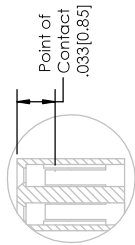
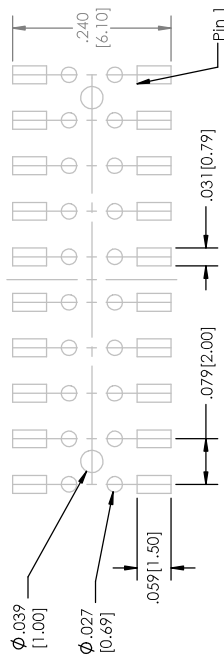


Recommended P.C. Board Layout
SCALE 6:1



U L S M B C - 2
(A) **(B)** **(C)** **(D)** **(E)** **(F)** **(G)** **(H)** **(I)** **(J)**

- A. Pins Per Row
 - 1 through 40
- B. Row Specification
 - D= Dual Row
- C. Surface Mount
- D. Plating Options
 - See Plating Options below
- E. Vertical
- F. Polarized Position
 - Leave blank if not needed
 - If required, specify empty pin position
 - e.g. 01Z for Pin 1Z
- G. Packing Information
 - TR= Tape and Reel
 - TB= Tube
- H. Pad
 - P= Plastic
 - K= Kapton
 - O= No Pad
 - If left blank, packaging at MLE's discretion
 - Pad may be metal, mylar or Plastic
- I. Alignment Pin
 - Leave Blank
 - AP= With
- J. Lead Free

Plating options	
G	-10u Gold on Contact Area/ Flash on Tail
T	-Matte Tin all Over
GT	-10u Gold on Contact Area/ Matte Tin on Tail
H	-30u Gold on Contact Area/ Matte Tin on Tail
F	- Gold Flash over Entire Pin
FT	- Gold Flash on Contact Area/ Matte Tin on Tail

Specifications:
 Insertion Force- Single Contact Only- H Plating:
 1.8oz. [0.50N] avg with .0197 [0.50mm] sq. pin
 Withdrawal Force- Single Contact only- H Plating:
 0.5oz. [0.17N] avg with .0197 [0.50mm] sq. pin

- Current Rating: 3.0 Ampere
 - Insulation Resistance: 1000M Ohms Min.
 - Dielectric Withstanding: 500V AC
 - Contact Resistance: 20M Ohms Max.
 - Operation Temperature: -40° C to +105° C
 - Max. Process Temperature
 - Peak: 260° C up to 10 secs.
 - Process: 230° C up to 60 secs.
 - Wave: 260° C up to 10 secs.
 - Rewlow: 260° C up to 10 secs.
 - Manual Solder: 350° C up to 5 secs.
- Materials:
 Contact Material: Phosphor Bronze
 Insulator Material: Nylon 61
 Plating: Au or Sn over 50j (1.27) Ni

Tails may be dipped to achieve specific dimensions.
 Products cut to specific sizes are uncancellable/ nonreturnable.
 Parts are subject to change without notices.

UNLESS OTHERWISE SPECIFIED: DIMENSIONS ARE IN INCHES TOLERANCES: ONE DECIMAL ±.100 TWO DECIMAL ±.100 THREE DECIMAL ±.005 FOUR DECIMAL ±.002			
NAME	DATE	REV	D
DRAWN	ECW 01/20/15	SIZE	DWG. NO.
CHECKED	GWE 01/20/15	TITLE	U L S M B C - 2 SERIES
ENG. APPR.		SCALE	1:1
MFG. APPR.		SHEET	1 OF 1
ADDRESS:	2533 Commercial Blvd. Jeffersonville, IN 47130		
INSURANCE/CONTRACTING FIRM:	Phone: 812-46704174		
MATERIAL:	Fax: 812-46704175		
FINISH:	E-Mail: mfe@mlerlectronics.com		
DO NOT SCALE DRAWING			

PROPRIETARY AND CONFIDENTIAL
 THE INFORMATION CONTAINED IN THIS DRAWING IS THE PROPERTY OF Major League Electronics. ANY REPRODUCTION OR TRANSMISSION OF THIS INFORMATION WITHOUT THE WRITTEN PERMISSION OF Major League Electronics IS PROHIBITED.

