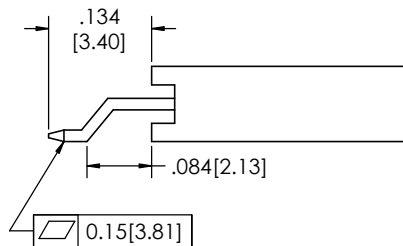
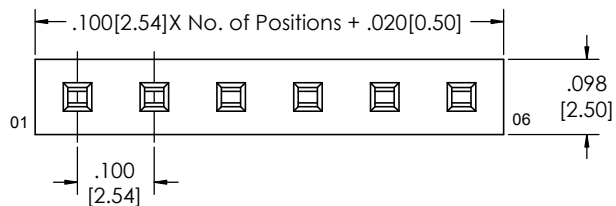
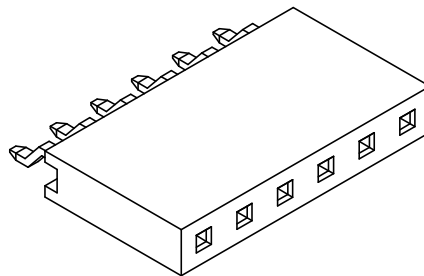
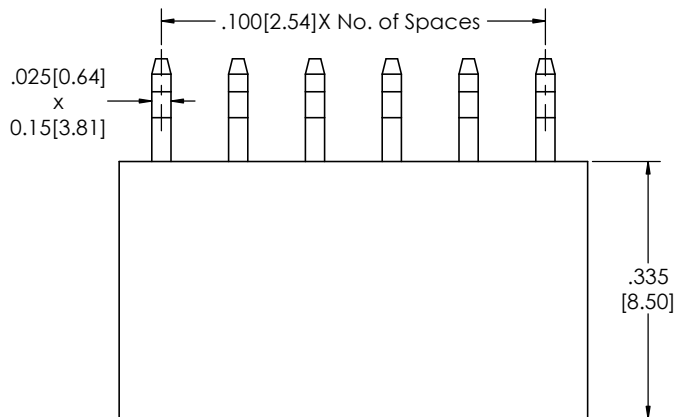
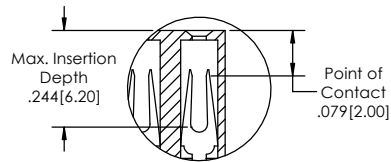
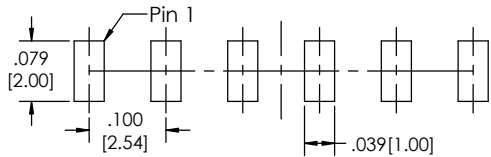
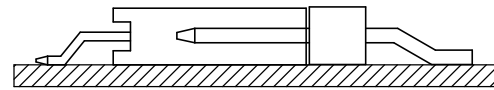


Recommended P.C. Board Layout
SCALE 8:1



APPLICATION



BLSSHSM-1 XX - S - 02 - F - H - XX - LF
(A) (B) (C) (D) (E) (F) (G)

- A. Pins Per Row - 02 through 06
- B. Row Specification - S= Single
- C. Surface Mount - 02
- D. Plating Options - See Plating Options below
- E. Horizontal - H
- F. Packing Information - TR= Tape and Reel - TB= Tube
- G. Lead Free

Mates With:

- BLTSR
- BLTSM
- BLTSM

Plating Options	
<input checked="" type="checkbox"/> F	Gold Flash over Entire Pin

Specifications:
 Insertion Depth: .145[3.68] to .250[6.35]
 Insertions Force- Per Contact- H Plating:
 6oz.[1.67N] avg. with .025[0.64mm] sq. pin
 Withdrawal Force- Per Contact- H Plating:
 5oz.[1.39N] avg with .025[0.64mm] sq. pin
 Current Rating: 3.0 Ampere
 Insulation Resistance: 1000M Ohms Min.
 Dielectric Withstanding: 1000V AC/Min.
 Contact Resistance: 20M Ohms Max.
 Operation Temperature: -25°C to +105°C
 Max. Process Temperature
 Peak: 260°C up to 20 secs.
 Process: 230°C up to 60 secs.
 Wave: 260°C up to 6 secs.
 Reflow: 260°C up to 10 secs.
 Manual Solder: 350°C up to 5 secs.

Materials:
 Contact Material: Phosphor Bronze
 Insulator Material: Nylon 6T
 Plating: 50µ" (1.27) Ni
 Color: White

Tails may be clipped to achieve specific dimensions.
 Products cut to specific sizes are uncancellable/ nonreturnable.
 Parts are subject to change without notice.



PROPRIETARY AND CONFIDENTIAL
 THE INFORMATION CONTAINED IN THIS DRAWING IS THE SOLE PROPERTY OF Major League Electronics. ANY REPRODUCTION IN PART OR AS A WHOLE WITHOUT THE WRITTEN PERMISSION OF Major League Electronics IS PROHIBITED.

UNLESS OTHERWISE SPECIFIED:		NAME	DATE
DIMENSIONS ARE IN INCHES		DRAWN: EOW	02/08/16
TOLERANCES:		CHECKED: GWE	02/08/16
ONE DECIMALS ±.100		ENG APPR:	
TWO DECIMAL ±.010		MFG APPR:	
THREE DECIMAL ±.005		ADDRESS:	
FOUR DECIMAL ±.002		2533 Centennial Blvd. Jeffersonville, IN 47130	
NEXT ASSY USED ON		Phone: 812-670-4174	
APPLICATION		Fax: 812-670-4175	
DO NOT SCALE DRAWING		E-Mail: mle@mlelectronics.com	
INTERPRET GEOMETRIC TOLERANCING PER:		TITLE: BLSSHSM-1-H SERIES	
MATERIAL:		SIZE DWG. NO. C	
FINISH:		REV D	
SCALE 8:1		SHEET 1 OF 1	

