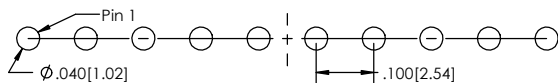
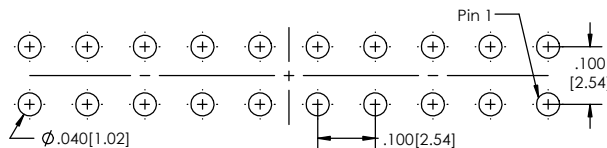


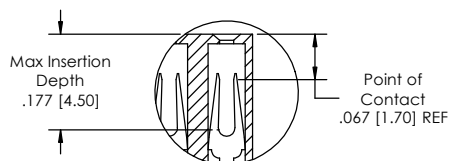
Recommended P.C. Board Layout SCALE 6:1



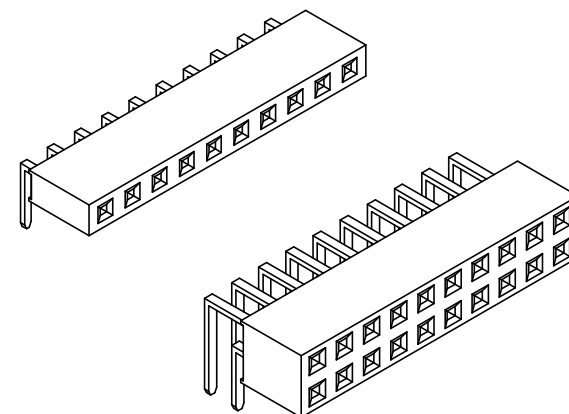
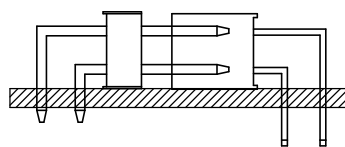
SINGLE ROW



DOUBLE ROW



APPLICATION



LSSHR-1 **XX** - **X** - **XX** - **XX** - **XX** - **XX** - **LF**
(A) (B) (C) (D) (E) (F) (G)

- A. Pins Per Row
- 02 through 40
B. Row Specification
- S= Single
- D= Double
C. Pin Options
- See Pin Options below
D. Plating Options
- See Plating Options below
E. Lock Tight "LT" (Optional)
- Leave blank if not needed
- LT= With
F. Polarized Position
- Leave blank if not needed
- If required, specify empty pin position
- e.g. 012 for Pin 12
G. Lead Free

Mates With:
BSTC TSHCR
BSTCM TSHCRE
BSTCR TSHCRSM
BSTCRSM TSHR
BSTS TSHRE
LBSTCM TSHS
LTSHCR TSHSCM
LTSHCRE TSHSM
LTSHR ULTSHSM
LTSHRE ULTSHC
LTSSHSM ULTSHCR
TSHC

Plating options	
G	-10µ Gold on Contact Area/ Flash on Tail
T	-Matte Tin all Over
GT	-10µ Gold on Contact Area/ Matte Tin on Tail
H	-30µ Gold on Contact Area/ Matte Tin on Tail
F	-Gold Flash over Entire Pin
FT	- Gold Flash on Contact Area/ Matte Tin on Tail

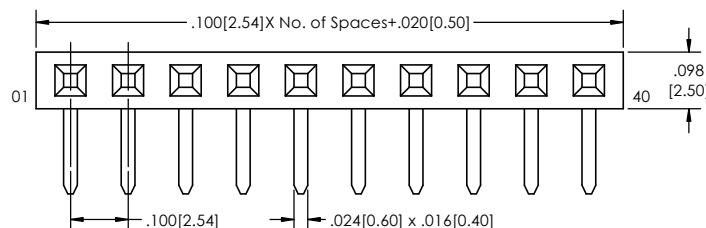
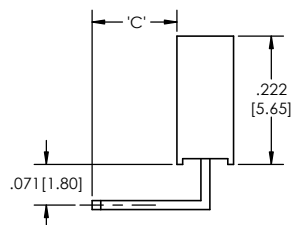
Pin Options	
Tail	
.129	3.30mm 02

Specifications:
Insertion Depth: .145[3.68] to .250[6.35]
Insertion Force- Per Contact- H Plating:
6oz.[1.67N] avg with .025[0.64mm] sq. pin
Withdrawal Force- Per Contact- H Plating:
5oz.[1.39N] avg with .025[0.64mm] sq. pin
Current Rating: 3.0 Ampere
Insulation Resistance: 1000M Ohms Min.
Dielectric Withstanding: 600V AC
Contact Resistance: 20M Ohms Max.
Operation Temperature: -40°C to +105°C
Max. Process Temperature
Peak: 260°C up to 20 secs.
Process: 230°C up to 60 secs.
Wave: 260°C up to 6 secs.
Manual Solder: 350°C up to 5 secs.

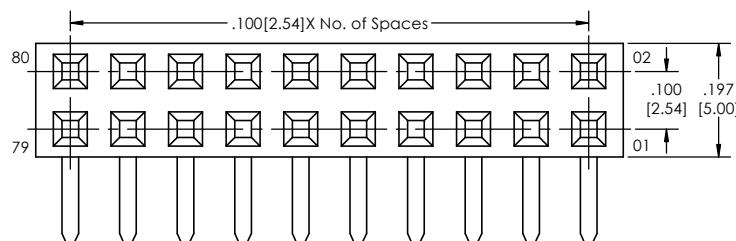
Materials:
Contact Material: Phosphor Bronze
Insulator Material: Nylon 6T
Plating: Au or Sn over 50µ" (1.27) Ni

Tails may be clipped to achieve specific dimensions.

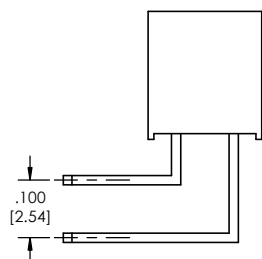
Products cut to specific sizes are uncancellable/ nonreturnable.
Parts are subject to change without notice.



SINGLE ROW



DOUBLE ROW



PROPRIETARY AND CONFIDENTIAL
THE INFORMATION CONTAINED IN THIS DRAWING IS THE SOLE PROPERTY OF Major League Electronics. ANY REPRODUCTION IN PART OR AS A WHOLE WITHOUT THE WRITTEN PERMISSION OF Major League Electronics IS PROHIBITED.

UNLESS OTHERWISE SPECIFIED:		NAME	DATE
DIMENSIONS ARE IN INCHES		DRAWN	EOW 01/19/15
TOLERANCES:		CHECKED	GWE 01/19/15
ONE DECIMALS ±.100		ENG APPR.	
TWO DECIMAL ±.010		MFG APPR.	
THREE DECIMAL ±.005		ADDRESS:	
FOUR DECIMAL ±.002		2533 Centennial Blvd.	
NEXT ASSY USED ON		Jeffersonville, IN 47130	
APPLICATION		Phone: 812-670-4174	
DO NOT SCALE DRAWING		Fax: 812-670-4175	
		E-Mail: mle@mlelectronics.com	
		TITLE: LSSHR-1 SERIES	
		SIZE	DWG. NO.
		C	
		REV	C
		SCALE: 8:1	
		SHEET 1 OF 1	

