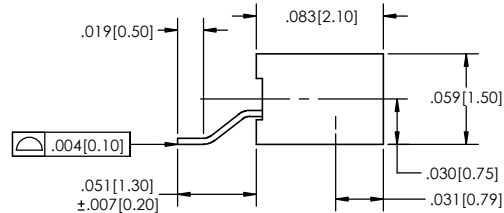
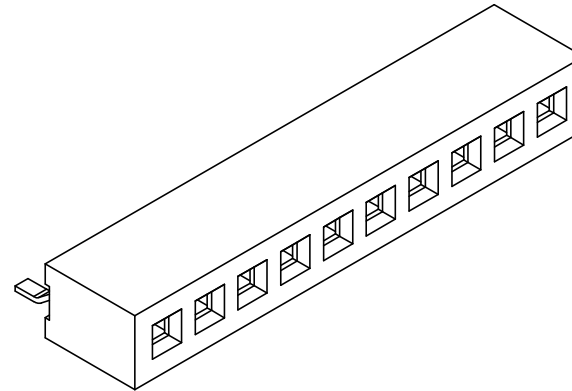
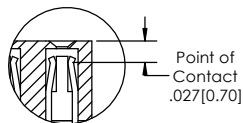
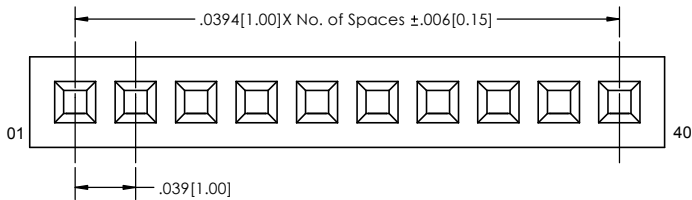
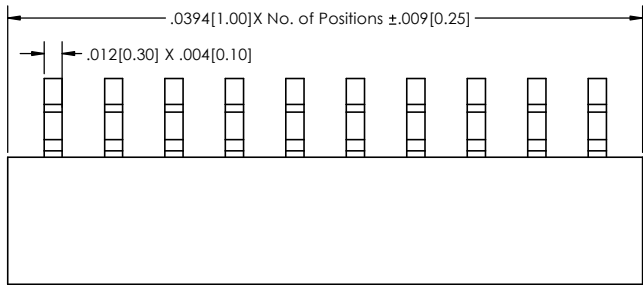
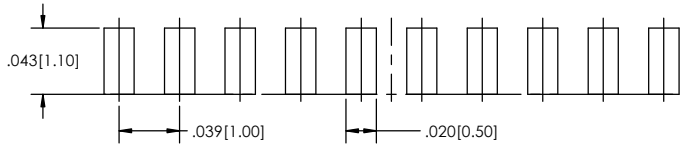


Recommended P.C. Board Layout

SCALE 16:1



LSMSS-7 **XX** - **S** - **04** - **XX** - **XX** - **XXX** - **LF**
(A) (B) (C) (D) (E) (F) (G)

- A. Pins Per Row
- 2 through 35
- B. Row Specification
- S= Single Row
- C. Pin Options
- 04 Horizontal Surface Mount
- D. Plating Options
- See Plating Options below
- E. Polarized Position
- Leave blank if not needed
- If required, specify empty pin position
- e.g. .012 for pin 12
- F. Packing Information
- TB= Tube
- TR= Tape and Reel
- Leave blank if not needed
- If left blank packaging at MLE's discretion
- G. Lead Free

Plating options	
FT	Gold Flash on Contact Area/ Matte Tin on Tail
T	Matte Tin all Over
GT	10µ Gold on Contact Area/ Matte Tin all Over

Specifications:
 Current Rating: 1.0 Ampere
 Insulation Resistance: 1000M Ohms Min.
 Dielectric Withstanding: 300V AC
 Contact Resistance: 40M Ohms Max.
 Operation Temperature: -40°C to +105°C
 Max. Process Temperature
 Reflow: 260°C up to 10 secs.
 Wave: 250°C up to 5-10 secs.
 Manual Solder: 350°C up to 3-5 secs.

Materials:
 Contact Material: Phosphor Bronze
 Insulator Material: Polyester, LCP, UL 94-V0
 Tails may be clipped to achieve specific dimensions.
 Products cut to specific sizes are uncancellable/ nonreturnable.
 Parts are subject to change without notice.

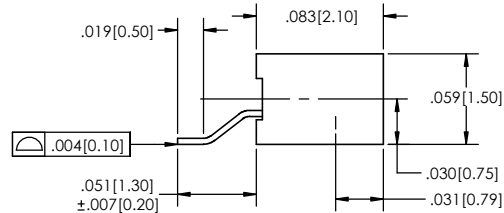
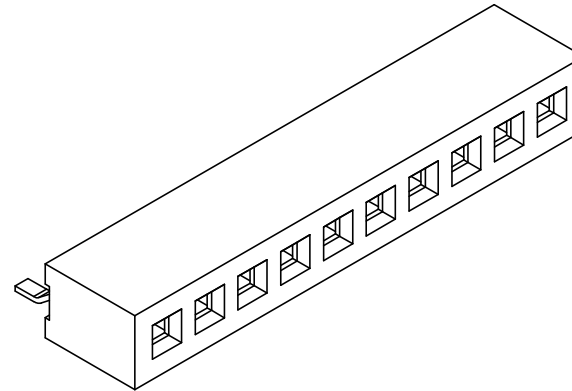
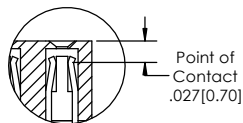
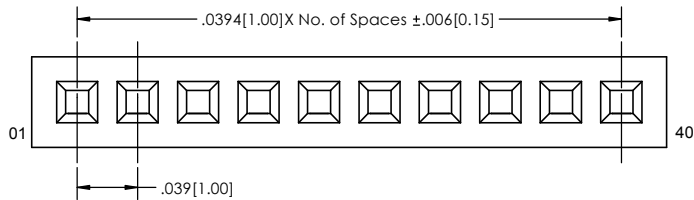
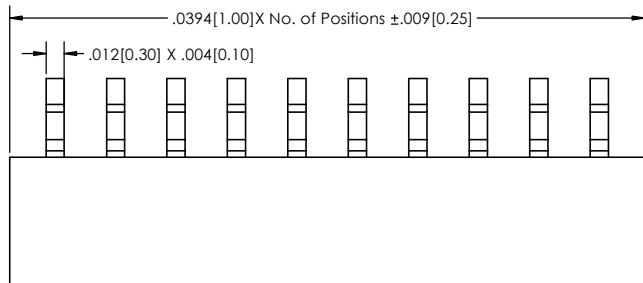
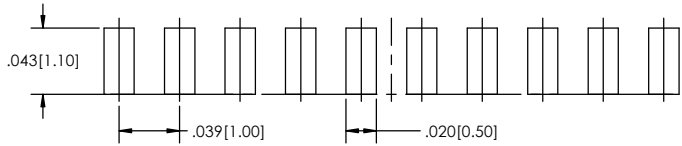


PROPRIETARY AND CONFIDENTIAL
 THE INFORMATION CONTAINED IN THIS DRAWING IS THE SOLE PROPERTY OF Major League Electronics. ANY REPRODUCTION IN PART OR AS A WHOLE WITHOUT THE WRITTEN PERMISSION OF Major League Electronics IS PROHIBITED.

UNLESS OTHERWISE SPECIFIED:		NAME		DATE	TITLE: LSMSS-7-SH SERIES
DIMENSIONS ARE IN INCHES TOLERANCES: ONE DECIMALS ±.100 TWO DECIMAL ±.010 THREE DECIMAL ±.005 FOUR DECIMAL ±.002	DRAWN	EOW	01/22/15	ADDRESS:	
	CHECKED	GWE	01/22/15		
	ENG APPR.				
	MFG APPR.				
INTERPRET GEOMETRIC TOLERANCING PER:	MATERIAL		FINISH		SCALE 16:1
NEXT ASSY	USED ON	APPLICATION		DO NOT SCALE DRAWING	SIZE DWG. NO. C
					REV D
					SHEET 1 OF 2

Recommended P.C. Board Layout

SCALE 16:1



LSMSS-7 **XX** - **S** - **04** - **XX** - **XX** - **XXX** - **LF**
(A) (B) (C) (D) (E) (F) (G)

- A. Pins Per Row
- 2 through 35
- B. Row Specification
- S= Single Row
- C. Pin Options
- 04 Horizontal Surface Mount
- D. Plating Options
- See Plating Options below
- E. Polarized Position
- Leave blank if not needed
- If required, specify empty pin position
- e.g. .012 for pin 12
- F. Packing Information
- TB= Tube
- TR= Tape and Reel
- Leave blank if not needed
- If left blank packaging at MLE's discretion
- G. Lead Free

Plating options	
FT	Gold Flash on Contact Area/ Matte Tin on Tail
T	Matte Tin all Over
GT	10µ Gold on Contact Area/ Matte Tin all Over

Specifications:
 Current Rating: 1.0 Ampere
 Insulation Resistance: 1000M Ohms Min.
 Dielectric Withstanding: 300V AC
 Contact Resistance: 40M Ohms Max.
 Operation Temperature: -40°C to +105°C
 Max. Process Temperature
 Reflow: 260°C up to 10 secs.
 Wave: 250°C up to 5-10 secs.
 Manual Solder: 350°C up to 3-5 secs.

Materials:
 Contact Material: Phosphor Bronze
 Insulator Material: Polyester, LCP, UL 94-V0
 Tails may be clipped to achieve specific dimensions.
 Products cut to specific sizes are uncancellable/ nonreturnable.
 Parts are subject to change without notice.



PROPRIETARY AND CONFIDENTIAL
 THE INFORMATION CONTAINED IN THIS DRAWING IS THE SOLE PROPERTY OF Major League Electronics. ANY REPRODUCTION IN PART OR AS A WHOLE WITHOUT THE WRITTEN PERMISSION OF Major League Electronics IS PROHIBITED.

UNLESS OTHERWISE SPECIFIED:		NAME		DATE	
DIMENSIONS ARE IN INCHES		DRAWN	EOW	02/23/15	
TOLERANCES:		CHECKED	GWE	02/23/15	
ONE DECIMALS ±.100		ENG APPR.			
TWO DECIMAL ±.010		MFG APPR.			
THREE DECIMAL ±.005		INTERPRET GEOMETRIC TOLERANCING PER:			
FOUR DECIMAL ±.002		MATERIAL			
NEXT ASSY	USED ON	FINISH			
APPLICATION		DO NOT SCALE DRAWING			

ADDRESS:
 2533 Centennial Blvd.
 Jeffersonville, IN 47130
 Phone: 812-670-4174
 Fax: 812-670-4175
 E-Mail: mle@mlelectronics.com



TITLE: LSMSS-7-H SERIES		SIZE	DWG. NO.	REV
		C		D
SCALE 16:1		SHEET 2 OF 2		