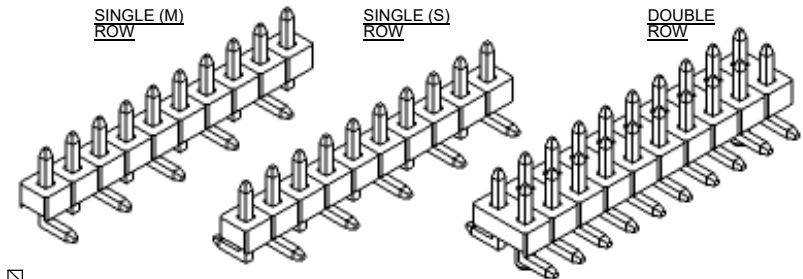
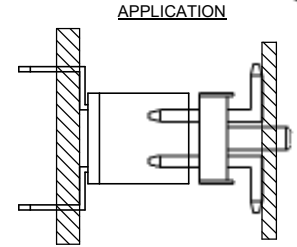
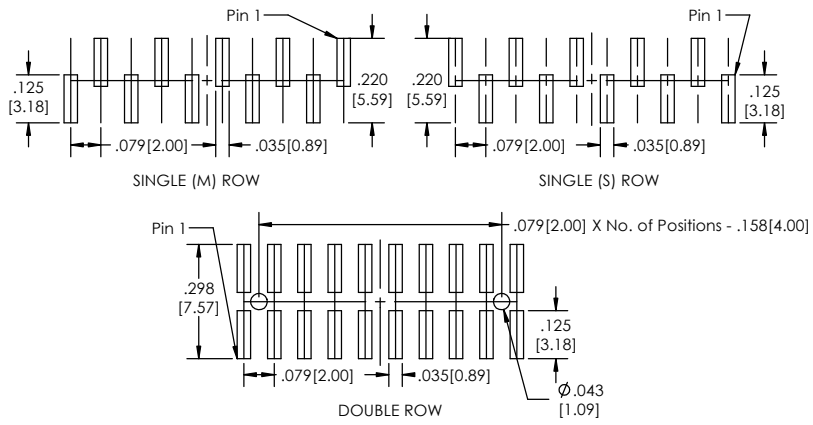


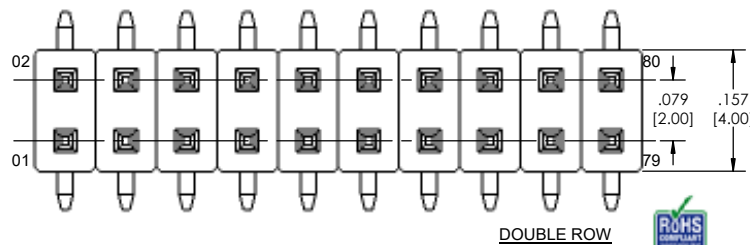
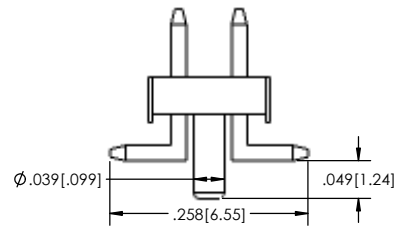
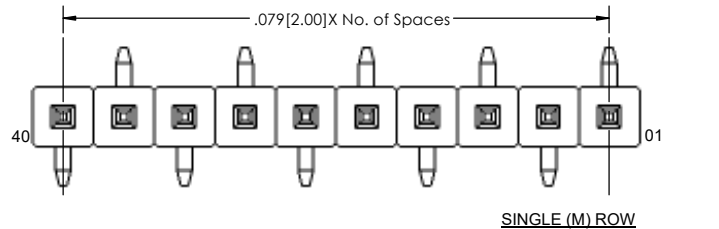
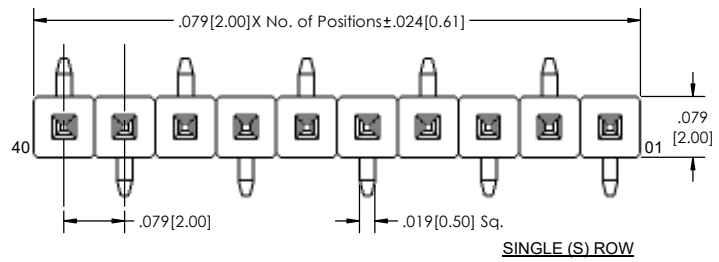
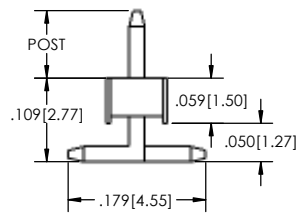
Recommended P.C. Board Layout
SCALE 4:1



TSHSM-2 **XX** - **X** - **XX** - **XX** - **X** - **XXX** - **X** - **XX** - **X** - **XX** - **LF**
(A) **(B)** **(C)** **(D)** **(E)** **(F)** **(G)** **(H)** **(I)** **(J)** **(K)**

- A. Pins Per Row
- 1 through 40
- B. Row Specification
- S= Single Row
- D= Double Row
- C. Pin Options
- See Pin Options below
- D. Plating Options
- See Plating Options below
- E. Vertical
- F. Polarized Position
- Leave blank if not needed
- If required, specify empty pin position
- e.g. .012 for Pin 12
- G. Footprint (Option only for Single Row)
- S= pin 1 left
- M= pin 1 right
- H. Packing Information
- TR= Tape and Reel
- TB= Tube
- I. Pad
- P= Plastic
- O= No Pad
- If left blank, packaging at MLE's discretion
- Pad may be metal, mylar or plastic
- J. Alignment Pin (Option only for Double Row)
- Leave blank if not needed
- AP= with
- K. Lead Free

Mates with:
BCSS
BSSH
BSSHC
BSSQ
BSSQM
LSMBC
LSSHSM
SMBC
SSHQ
SSHQR
SSHR
SSHS
SSHSM
ULSMBC.



Plating options	
G	-10µ Gold on Contact Area/ Flash on Tail
T	-Matte Tin all Over
GT	-10µ Gold on Contact Area/ Matte Tin on Tail
H	-30µ Gold on Contact Area/ Matte Tin on Tail
F	-Gold Flash over Entire Pin
FT	-Gold Flash on Contact Area/ Matte Tin on Tail

Pin Options	
Max. Post Height	01
.065 [1.65mm]	02
.088 [2.24mm]	04
.126 [3.20mm]	06
.156 [3.96mm]	16
.230 [5.84mm]	20
.250 [6.35mm]	21
.289 [7.34mm]	30
.388 [9.86mm]	34
.408 [10.36mm]	35
.427 [10.85mm]	36
.447 [11.35mm]	39
.546 [13.87mm]	40

Specifications:
Current Rating: 3.0 Ampere
Insulation Resistance: 1000M Ohms Min.
Dielectric Withstanding: 500V AC
Contact Resistance: 20M Ohms Max.
Operation Temperature: -40°C to +105°C
Max. Process Temperature
Peak: 260°C up to 10 secs.
Process: 230°C up to 60 secs.
Wave: 260°C up to 6 secs.
Reflow: 260°C up to 10 secs.
Manual Solder: 350°C up to 5 secs.

Materials:
Contact Material: Phosphor Bronze
Insulator Material: Nylon 6T
Plating: Au or Sn over 50µ" (1.27) Ni

Tails may be clipped to achieve specific dimensions.
Products cut to specific sizes are uncancellable/ nonreturnable.
Parts are subject to change without notice.

UNLESS OTHERWISE SPECIFIED:		NAME		DATE	
DIMENSIONS ARE IN INCHES		DRAWN	EOW	02/06/14	
TOLERANCES:		CHECKED	GWE	02/06/14	
ONE DECIMALS ±.100		ENG APPR.			
TWO DECIMAL ±.010		MFG APPR.			ADDRESS: 2533 Centennial Blvd. Jeffersonville, IN 47130 Phone: 812-670-4174 Fax: 812-670-4175 E-Mail: mle@mlelectronics.com
THREE DECIMAL ±.005		INTERPRET GEOMETRIC TOLERANCING PER:			TITLE: TSHSM-2-V SERIES
FOUR DECIMAL ±.002		MATERIAL			SIZE DWG. NO.
NEXT ASSY		FINISH			REV B
USED ON		DO NOT SCALE DRAWING			SCALE 8:1
APPLICATION					SHEET 1 OF 1

PROPRIETARY AND CONFIDENTIAL
THE INFORMATION CONTAINED IN THIS DRAWING IS THE SOLE PROPERTY OF Major League Electronics. ANY REPRODUCTION IN PART OR AS A WHOLE WITHOUT THE WRITTEN PERMISSION OF Major League Electronics IS PROHIBITED.