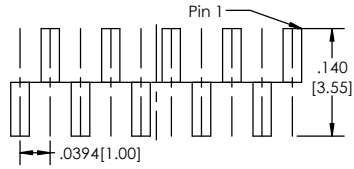
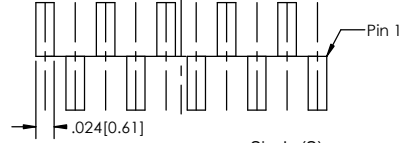


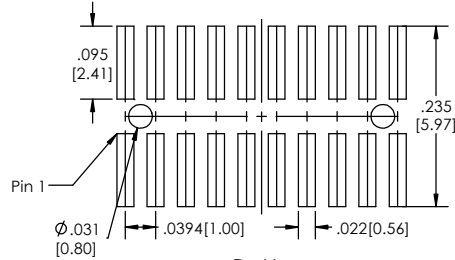
**Recommended P.C. Board Layout**  
SCALE 8:1



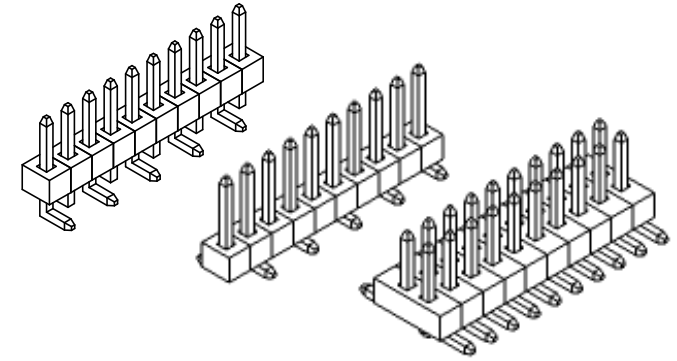
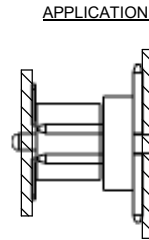
Single (M)



Single (S)

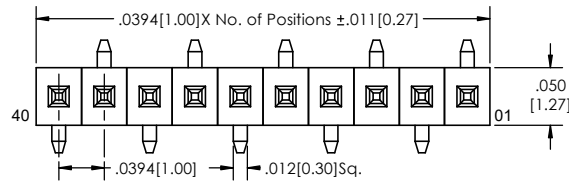


Double

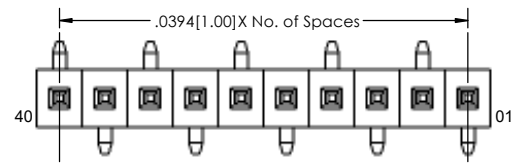


TSHSM-7 XX - X - XX - XX - V - XXX - X - XX - X - XX - LF  
(A) (B) (C) (D) (E) (F) (G) (H) (I) (J) (K)

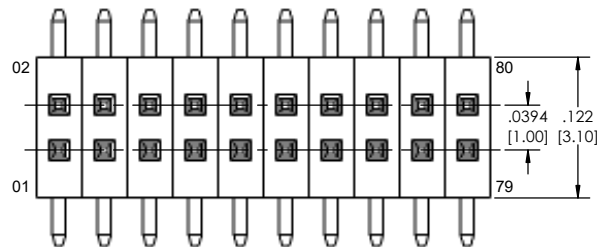
- A. Pins Per Row
  - 1 through 40
- B. Row Specification
  - S= Single Row
  - D= Double Row
- C. Pin Options
  - See Pin Options below to select Post Height
- D. Plating Options
  - See Plating Options below
- E. Vertical
- F. Polarized Position (Only for Double Row)
  - Leave blank if not needed
  - If required, specify empty pin position
  - e.g. 012 for Pin 12
- G. Footprint
  - S= Pin 1 left
  - M= Pin 1 right
- H. Packing Information
  - TR= Tape and Reel
  - TB= Tube
- I. Pad
  - P= Plastic
  - O= No Pad
  - If left blank, packaging at MLE's discretion
  - Pad may be metal, mylar or plastic
- J. Alignment Pin Option (Only available for the Double Row)
  - Leave blank if not needed
  - AP= With
- K. Lead Free



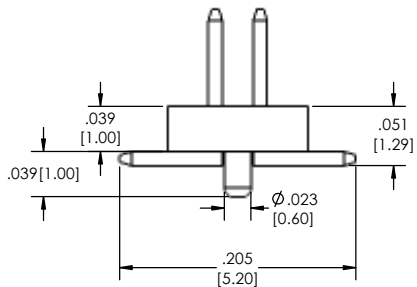
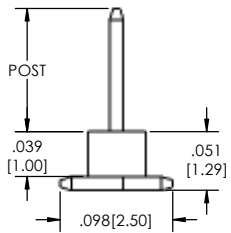
SINGLE (M) ROW



SINGLE (S) ROW



DOUBLE ROW



Plating Options		Pin Options	
T	Matte Tin all Over	.065	04
F	Gold Flash over Entire Pin	.075	06

Specifications:  
 Current Rating: 1.0 Ampere  
 Insulation Resistance: 1000M Ohms Min.  
 Dielectric Withstanding: 300V AC  
 Contact Resistance: 20M Ohms Max.  
 Operation Temperature: -40°C to +105°C  
 Max. Process Temperature  
 Wave Solder: Solder Temp 260 ±5°C  
 Immersion period: 5 ±5 secs.  
 Reflow Solder: Pre-Heat Temp: 100- 150°C for 60 secs max  
 Temperature: min. 210°C for 30 secs max.  
 Peak Temperature: 260 ±5°C, 10 ±5 secs.  
 Manual Solder: 245 ±3°C 3-5 secs.

Materials:  
 Contact Material: Phosphor Bronze  
 Insulator Material: LCP, UL94V-0

Tails may be clipped to achieve specific dimensions.  
 Products cut to specific sizes are uncancellable/ nonreturnable.  
 Parts are subject to change without notice.



PROPRIETARY AND CONFIDENTIAL  
 THE INFORMATION CONTAINED IN THIS DRAWING IS THE SOLE PROPERTY OF Major League Electronics. ANY REPRODUCTION IN PART OR AS A WHOLE WITHOUT THE WRITTEN PERMISSION OF Major League Electronics IS PROHIBITED.

UNLESS OTHERWISE SPECIFIED:		NAME		DATE	
DIMENSIONS ARE IN INCHES		DRAWN		EOW	
TOLERANCES:		CHECKED		GWE	
ONE DECIMALS ±.100		ENG APPR.			
TWO DECIMAL ±.010		MFG APPR.			
THREE DECIMAL ±.005		INTERPRET GEOMETRIC TOLERANCING PER:		ADDRESS:	
FOUR DECIMAL ±.002		MATERIAL		2533 Centennial Blvd. Jeffersonville, IN 47130	
NEXT ASSY USED ON		FINISH		Phone: 812-670-4174	
APPLICATION		DO NOT SCALE DRAWING		Fax: 812-670-4175	
				E-Mail: mle@mlelectronics.com	
				TITLE: TSHSM-7-V SERIES	
				SIZE DWG. NO.	
				C	
				REV C	
				SCALE 16:1	
				SHEET 1 OF 1	

